

Project Name	Type
Catalog #	Date

ARCHITECTURAL RECESSED TROFFER LED

ART LED

2x4 SIZE SHOWN WITH FLAT LENS TREATMENT



2x2 SIZE SHOWN WITH FLAT LENS TREATMENT



APPLICATIONS

- Office Spaces
- Conference Rooms
- Municipal Facilities
- Medical Facilities
- Financial Institutions
- Retail Spaces
- Hospitality Areas
- Corridors

APPROVALS

- ETL Listed.
- Complies with UL 1598 and CSA C22.2#250.0.0:2008
- BAA Compliant.
- RoHS Compliant.
- Appropriate parts/test guidelines were performed by ATAL www.ata-labs.com

FEATURES

- Up to 10157 Lm delivered
- The ART is an elegant architectural recessed troffer that uses patented LED technology to create soft and consistent illumination.
- The evenly illuminated, back-lit curved polycarbonate lens provides uniform light distribution overall.
- Choice of a “floating” curved, “floating” flat or round decorative center lens treatment adds a stylish appearance.
- Tunable White option is available on our [website](http://www.xtralight.com):

ELECTRICAL

- Voltage: 120-277 VAC input, 0-10V dimming is standard.
- Driver: 24VDC Class 2, constant current, electronic power supply factory calibrated to LED modules. Multi-volt 120-277V, 0-10V dimming option is standard.
- Best-in-class LEDs: 3000K, 3500K and 4000K (min 80 CRI).

ACCESSORIES

- Recessed troffer flange kit available, ordered separately (consult factory).

WARRANTY

- Backed by XtraLight’s industry leading 10-year warranty.

CONSTRUCTION

- Housing: 22 gauge white steel for durability.

ORDER LOGIC

SAMPLE CATALOG NUMBER: ART24-3000L-30K-DIM-C-EM

ART	SIZE	MODEL	CCT	DRIVER	LENS	OPTIONS
14	1x4	2000L	30K 3000K	DIM Dimmable 0-10V, Multi-Volt 120-277V	C ¹ Curved Floating Center Treatment R ¹ Round Center Treatment F Flat Floating Center Treatment	EM 10W Emergency LED Driver (120-277V Only) GTD Generator Transfer Device
		3000L	35K 3500K			
		4500L	40K 4000K	LDE1 Hi-Lume™ 1% EcoSystem™ LED Driver with Soft-On, Fade-to-Black™ LDE5 5-Series EcoSystem™ LED Driver		
		5000L				
		6500L				
22	2x2	2000L				
		3000L				
		4500L				
24	2x4	4500L				
		5500L				
		7000L				
		8500L				
		10000L				

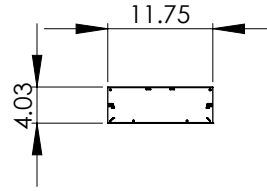
1. [C] & [R] Lens Options Not Available in 1x4 Size.



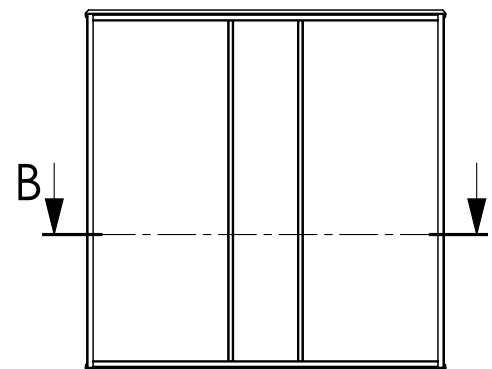
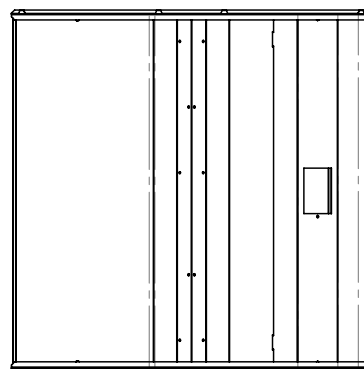
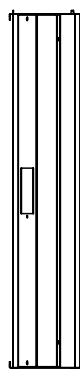
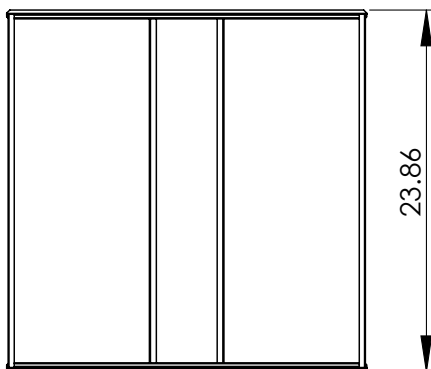
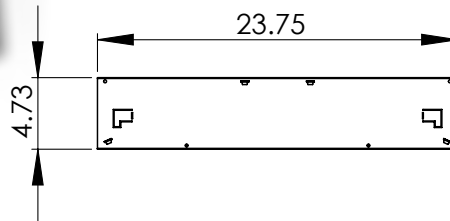
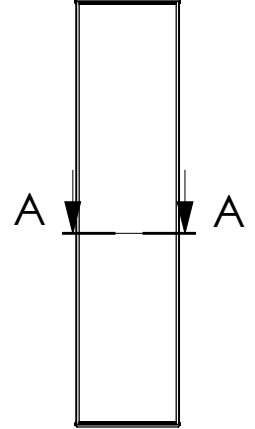
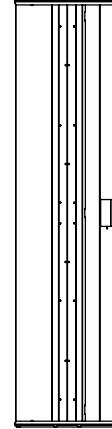
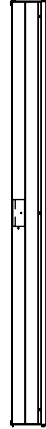
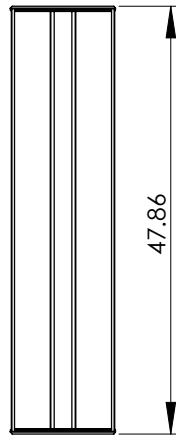
ARCHITECTURAL RECESSED TROFFER LED

ART LED

DIMENSIONAL DATA



1X4 SIZE
SHOWN



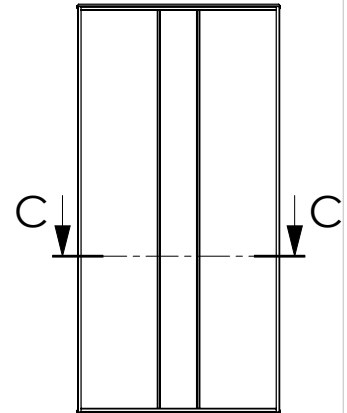
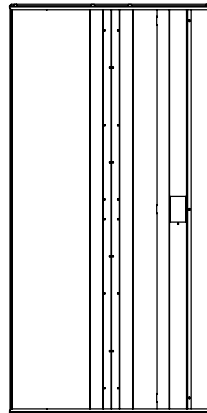
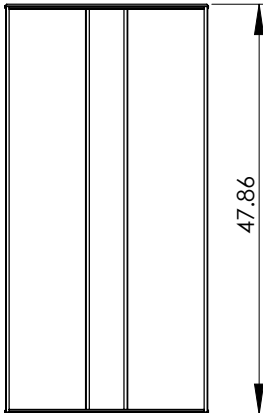
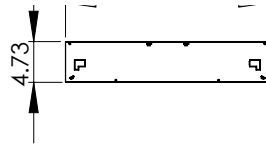
ARCHITECTURAL RECESSED TROFFER LED

ART LED

DIMENSIONAL DATA

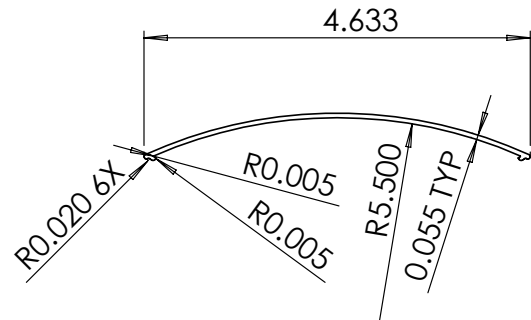


2 X4 SIZE
SHOWN

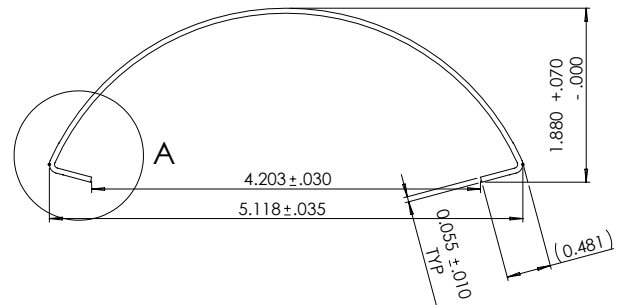


LENS DATA

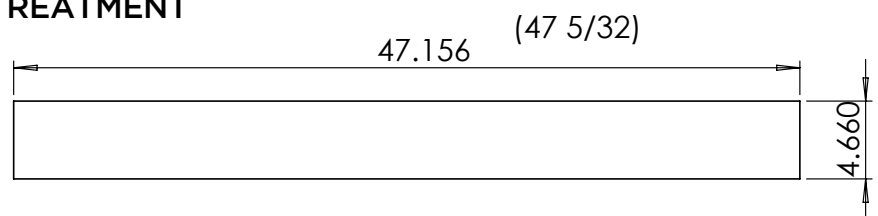
CURVED FLOATING LENS CENTER TREATMENT



ROUND CENTER TREATMENT



FLAT FLOATING LENS CENTER TREATMENT



WORKING HARDER. LIGHTING SMARTER.

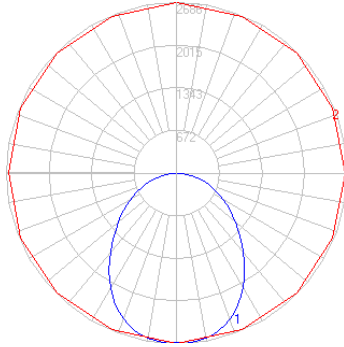
ARCHITECTURAL RECESSED TROFFER LED

ART LED

PHOTOMETRIC DATA

ART 6500L 1x4

Catalog Number: ART14-6500L-40K-DIM-F
 Report Number: ATAL024430.ies
 Issue Date: 05/02/18
 Lamp: 4 LED Modules
 Lens/Optics: Flat
 IESNA: LM-63-2002
 Total Input Watts: 55.0
 Efficacy (Lm/W): 117.7
 Total Lumens: 6472



	0°	22.5°	45°	67.5°	90°
0°	2674	2674	2674	2674	2674
15°	2494	2510	2534	2550	2563
25°	2225	2239	2265	2281	2287
35°	1847	1864	1872	1868	1863
45°	1437	1441	1433	1420	1409
55°	1047	1048	1037	1025	1019
65°	715	711	706	697	694
75°	421	419	421	406	399
85°	143	140	108	91	90
90°	8	7	8	7	8

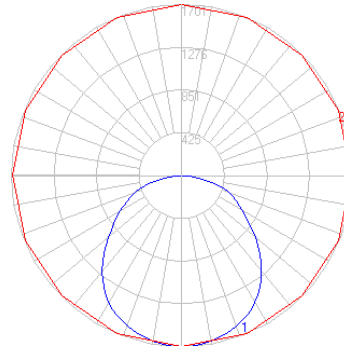
Zone	Lumens	%Fixt
0-30	2003.69	31.00
0-40	3168.95	49.00
0-60	5203.07	80.40
0-80	6337.88	97.90
0-90	6470.76	100.00
90-180	1.03	0.00
0-180	6471.79	100.00

AVERAGE LUMINANCE

	0°	45°	90°
45°	5984	5967	5867
55°	5375	5323	5231
65°	4981	4919	4835
75°	4789	4789	4539
85°	4831	3649	3040

ART 4500L 2x2

Catalog Number: ART22-4500L-40K-DIM-F
 Report Number: ATAL024432.ies
 Issue Date: 05/02/18
 Lamp: 2 LED Modules
 Lens/Optics: Flat
 IESNA: LM-63-2002
 Total Input Watts: 42.6
 Efficacy (Lm/W): 104.6
 Total Lumens: 4458



CANDELA DISTRIBUTION

	0°	22.5°	45°	67.5°	90°
0°	1699	1699	1699	1699	1699
15°	1579	1586	1607	1629	1639
25°	1388	1407	1455	1513	1537
35°	1141	1172	1248	1329	1359
45°	887	920	1003	1071	1097
55°	647	681	755	806	827
65°	436	471	532	579	598
75°	249	283	333	369	384
85°	69	83	77	70	68
90°	3	4	5	7	6

ZONAL LUMEN SUMMARY

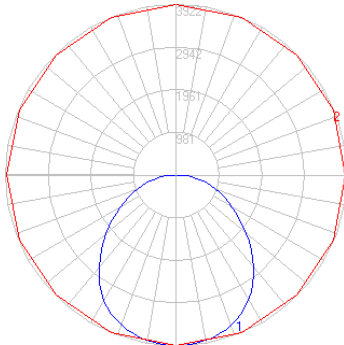
Zone	Lumens	%Fixt
0-30	1285.04	28.80
0-40	2066.17	46.30
0-60	3503.03	78.60
0-80	4363.39	97.90
0-90	4457.30	100.00
90-180	0.70	0.00
0-180	4458.00	100.00

AVERAGE LUMINANCE

	0°	45°	90°
45°	3712	4198	4591
55°	3338	3896	4267
65°	3053	3725	4188
75°	2847	3808	4391
85°	2343	2615	2309

ART 10000L 2x4

Catalog Number: ART24-10000L-40K-DIM-R
 Report Number: ATAL024431.ies
 Issue Date: 05/01/18
 Lamp: 4 LED Modules
 Lens/Optics: Round
 IESNA: LM-63-2002
 Total Input Watts: 87.8
 Efficacy (Lm/W): 115.7
 Total Lumens: 10157



CANDELA DISTRIBUTION

	0°	22.5°	45°	67.5°	90°
0°	3910	3910	3910	3910	3910
15°	3658	3679	3726	3768	3790
25°	3264	3310	3400	3489	3524
35°	2734	2796	2914	3023	3061
45°	2144	2200	2315	2405	2431
55°	1561	1607	1705	1765	1781
65°	1039	1070	1148	1194	1214
75°	582	603	673	714	730
85°	177	204	230	230	229
90°	12	15	23	28	25

ZONAL LUMEN SUMMARY

Zone	Lumens	%Fixt
0-30	2983.02	29.40
0-40	4799.54	47.30
0-60	8087.15	79.60
0-80	9913.85	97.60
0-90	10154.4	100.00
90-180	2.89	0.00
0-180	10157.29	100.00

AVERAGE LUMINANCE

	0°	45°	90°
45°	4367	4715	4951
55°	3919	4281	4472
65°	3541	3912	4137
75°	3238	3745	4062
85°	2925	3801	3784

PRODUCT PERFORMANCE

MODEL	LENS	CCT	WATTS	LUMENS	EFFICACY
ART14-6500L	FLAT	4000K	55.0	6472	117.7
ART22-4500L	FLAT	4000K	42.6	4458	104.6
ART24-10000L	ROUND	4000K	87.8	10157	115.7